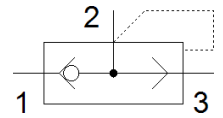
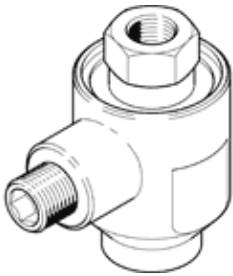


# quick exhaust valve

## SE-1/4-B

Part number: 9686

FESTO



## Data sheet

Feature	Value
Valve function	Quick exhaust
Pneumatic connection, port 1	G1/4
Pneumatic connection, port 2	G1/4
Mounting type	Threaded
Standard nominal flow rate, exhaust	1,200 l/min
Standard nominal flow rate for pressurisation 6->5 bar	960 l/min
Operating pressure	0.5 ... 10 bar
Ambient temperature	-20 ... 75 °C
Material housing	Zinc die-casting
Operating medium	Compressed air in accordance with ISO8573-1:2010 [7:-:-]
Nominal size	7 mm
Assembly position	Any
Note on operating and pilot medium	Lubricated operation possible (subsequently required for further operation)
Medium temperature	-20 ... 75 °C
Product weight	100 g
Pneumatic connection, port 3	G1/4
Material seals	NBR